





Association of Eastern Motor Clubs
EAST ANGLIA'S MOTORSPORT FORUM (UK)

Regulations 2008



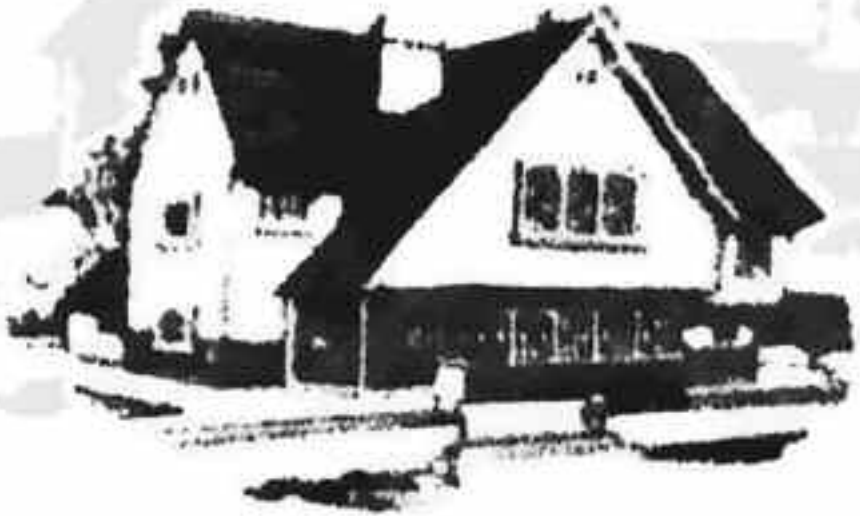
Ward Construction

We build on our reputation!!

MTD

M-Tech Developments

ROAD • RACE • RALLY



Ward Construction

We build on our reputation!!

www.ward-construction.co.uk



2008 AEMC Stage Rally Championship

Sponsored by;

Ward Construction

M-Tech Developments

Welcome to the 2008 Association of Eastern Motor Clubs Stage Rally Championship sponsored by Ward Construction. We are delighted to announce that Pat Ward of Ward Construction has agreed to continue to support this year's championship along with a new sponsor for the year, M-Tech Developments. Mark Wood specialises in Ford, Subaru, Porsche and Mitsubishi as well as F2, S1600 and of course WRC and can prepare, hire or be there for on-event servicing. For 2008 we intend to continue with the development of the championship with continued input from you, the competitor. With the new points system introduced in last years championship, I think you will agree that it has been a success and something that will continue in 2008.

On offer is a calendar of 15 events starting on the 30th December 2007 and going through to December 2008. Again competitors will be able to count their best 7 scores towards their final championship position, points also being awarded on a class basis so the overall winners of the championship could be driving a Ford KA or a Subaru. We aim to promote a championship that is affordable, competitive and most importantly, one which is friendly and people will enjoy contesting.

Results and championship tables will be updated after each event and will be shown on the AEMC website (www.aemc.org.uk). Competitors will also receive quarterly bulletins showing championship positions, updates to the championship calendar along with any news and views.

During the year Taymor Motorsport intends to work closely with competitors, organisers and sponsors to see how the championship can be improved further for 2008. We welcome any of your ideas and suggestions and will be available at all events; just look out for the blue Taymor motorsport clothing. We may not be able to incorporate all of them but as this is YOUR regional championship lets make it one that people want to contest and enjoy.

We look forward to receiving your registration form and hope you have an enjoyable seasons rallying.

Good luck.

Rob Cook

Assistant Championship Co-ordinator

1 SPORTING REGULATIONS – GENERAL

The 2008 Ward Construction, AEMC Stage Rally Championship is organised by the AEMC and administered by Taymor Motorsport in accordance with the general Championship prescriptions of the Royal Automobile Club Motor Sports Association (MSA) and these Championship Regulations.

MSA Championship Permit No: 16/2008 National B
MSA Championship Grade E

The championship will run from 30th December 2007 to 23rd December 2008.

1.2.1 All correspondence to the Assistant Co-ordinator.

Championship Co-ordinator; Clive Taylor Taymor Motorsport, 21 Anglesey Place, Great Barton, Bury St Edmunds, Suffolk IP31 2TW Phone/Fax: 01284 788095 Mobile: 07771 644202 Email: info@taymormotorsport.com www.taymormotorsport.com	Assistant Co-ordinator; Rob Cook Churchview Bungalow Church Road Bardwell Bury St Edmunds Suffolk IP31 1AH 07976 446501 rjc.cook@orange.net (please put AEMC in subject title)
---	---

1.2.2 Championship Scrutineer Loyd Gerken

1.2.3 Championship Stewards; John White Clive Grounds Dan Cornwall

1.3 Competitor Eligibility

1.3.1 The championship is open to Drivers & Co-drivers who must be fully paid up members of a member club of the Association of Eastern Motor Clubs and must hold a current membership card. They must be registered for the championship and also be in possession of a valid 2008 MSA Competition Licence.

All necessary documentation must be presented at all championship rounds when signing on.

1.4 Registration

1.4.1 All drivers and co-drivers must register as competitors for the championship by returning a fully completed Registration Form along with the full Registration Fee to the Championship Co-ordinator or Assistant Co-ordinator.

1.4.2 The Registration Fee is £10.00. Cheques to be made to "AEMC" Registration entitles a competitor to enter as either a Driver or a Co-driver but not both. Should a competitor wish to register as both a driver and a co-driver he/she must register for EACH category separately on separate registration forms enclosing a registration fee of £10.00 with each form.

- 1.4.3 The closing date for registrations for the championship will be Monday July 7th 2008.
- 1.4.4 Competitors MUST nominate on their Registration Form one (1) AEMC member club to which they are subscribed and (2) which Club Championship points will be accredited. If the contender ceases to be a member of the club or is to nominate an alternative club, then no more points will be awarded to the competitor's first nominated club.
- 1.4.5 Contenders will be issued with a Championship Registration Card which must be produced at "signing-on" for championship events in which the contender participates.
- 1.4.6 Contenders will be issued with championship decals which must be displayed on either side of the car. They must be displayed "as issued" and not be altered, cut, trimmed or modified in ANY WAY.
- 1.4.7 Any results scored in a qualifying round of the championship PRIOR to registration will not count towards competitors final championship points score.

1.5 Championship Rounds

- 1.5.1 The 2008 Ward Construction AEMC Stage Rally Championship will be contested over 16 rounds as follows

Longmoor Loco 30 December Tarmac	Longmoor Camp, Nr Borden Sutton & Cheam	Barry Guess 01252 727390 barrgcharlie@aol.com	www.scmc.co.uk
Emerald Stages 16 February Tarmac	Rockingham London Irish		www.londonirishmotorclub.com
Speedy Hire Stages 2 March Tarmac	Rockingham Cambridge Car Club		www.speedyhirestages.co.uk
Mini Tempest Stages 30 March Tarmac	Longcross Sutton & Cheam		www.scmc.co.uk
Malcolm Watson Spring Stages 13 April Tarmac	Sculthorpe SCCoN	springstages@sccon.uk www.sccon.co.uk	
The Twyford Stages 20 April Mixed	Twyford Wood Mid Derbyshire	Jim Whitby 07976 971266 www.mid-derbyshiremc.co.uk	
Milbrook Stages 26 May Tarmac	Milbrook Proving Ground, Bedford West Essex	Gary nicholls 01245 351468 gary@wecc.co.uk	www.wecc.co.uk
CAR-nival Stages 8 June Tarmac	Abingdon Sutton & Cheam	Pam Guess 01252 727390 barrgcharlie@aol.com	
Dukeries 14 June Forest	Mansfield Dukeries	Bob Draper r.c.draper@btinternet.co.uk www.dukeries-motorclub.co.uk	

Essex Charity Stages 13 July Mixed	Bradwell Wickford Auto Club	Steve Flemming 01702 207152 www.wickfordautoclub.co.uk
Bomb Along Stages 7 September	Venue to be confirmed Middlesex	www.mcac.co.uk
Hutton Kitchen Woodbridge Stages 11 October Tarmac	Woodbridge Chelmsford MC	entries@woodbridgestages.co.uk woodbridgestages.co.uk
Rallitrac Premier Stages 26 October Forest	Southwell Dukeries	Howard Wilcock 0115 965176 entries@premier-rally.co.uk
Lynn Charity Stage 9 November Tarmac	Sculthorpe Kings Lynn & District	Colin Shinkins 01945 772627
Rockingham Stages 13-14 December	Rockingham Middlesex	www.mcac.co.uk

1.6 Scoring

- 1.6.1 Points will be awarded according to the AEMC class structure (see 5.2) and will only be awarded to competitors listed as classified finishers in the Final Results for each round as follows:
- 1st AEMC contender in class = 30 points
 - 2nd AEMC contender in class = 26 points
 - 3rd AEMC contender in class = 23 points
 - 4th AEMC contender in class = 20 points
 - 5th AEMC contender in class = 18 points
 - 6th AEMC contender in class = 16 points
 - 7th AEMC contender in class = 15 points
 - Pro-rata down to 1 point
- 1.6.2 A competitors best 7 points scores from any qualifying round will be used to determine his or her final championship position. The winner of the Championship shall be the contender who has gained the highest possible number of points from a maximum of 7 scores from qualifying events applying at the conclusion of the championship year.
- 1.6.3 Ties shall be resolved in favour of the competitor gaining the greater number of premier award positions in the championship. If this fails to reach a conclusion then the greater number of 2nd places, then 3rd places etc. will be used to finalise the championship positions.
- 1.6.4 Should a contender fail to comply with 1.4.4 & 1.4.6 then the scoring of Championship points will be withdrawn forthwith.
- 1.6.5 Competitors changing "crew places" (Driver to co-driver and vice-versa) may not "carry-over" points scored.

- 1.6.6 Any driver changing class during the year may carry over points from any class to the overall driver's championship. HOWEVER he or she must register for each class separately and supply a completed registration form along with a full registration fee for each class entered. This must be place with the championship co-ordinator no later than July 8th 2008.
- 1.6.7 In the case of a technical exclusion, the driver will loose all points earned up to that time.
- 1.6.8 Co-drivers changing class WILL be permitted to "carry-over" any points scored in any class towards his or her final championship score.
- 1.6.9 One (1) point will be awarded to the member club nominated by each competitor registered in the Championship. This will count towards a Club Championship award.
- 1.6.10 Results will become final 7 days after the issue of the final Championship bulletin.

1.7 Awards

1.7.1 Overall Awards;

1st overall driver	The Charles Golding Trophy
1st overall co-driver	The Chris Rees trophy
2nd overall driver	3rd overall driver
2nd overall co-driver	3rd overall co-driver

Any competitor winning one of the overall championship awards will not be eligible to win any of the class awards.

1.7.2 Class Awards

1st overall driver in class	1st overall co-driver in class
2nd overall driver in class	2nd overall co-driver in class
3rd overall driver in class	3rd overall co-driver in class

2nd place class awards are subject to a minimum of 3 entries per class.

3rd place class awards are subject to a minimum of 5 entries per class.

- 1.7.3 There will be an award for the lady competitor gaining the most points as either a Driver or Co-driver. Any tie will be resolved as 1.6.3
- 1.7.4 An award will be presented to the Association Motor club that gains the most points in the Club Championship.
- 1.7.5 Additional awards may be presented at the discretion of the championship co-ordinator, the championship sponsors and the AEMC. These will be notified to championship contenders in Competitors Bulletins.

- 1.7.6 Details of the time and location of the end of season award presentation will be made to Championship contenders in a Competitors Bulletin.
- 1.7.7 An award may be presented to the person or persons who have made a positive contribution to stage rallying in 2008.
- 1.7.8 Any competitor failing to attend the Championship Awards Presentation or who fails to appoint a representative on his or her behalf may forfeit their award. Any such award may be re-allocated to the next placed championship contender.

2 Sporting Regulations – Judicial Procedures

- 2.1 Rounds: In accordance with Section C(d) of the 2008 MSA Year Book.
- 2.2 Championship: In accordance with Section C(d) of the 2008 MSA Year Book.

3 Sporting Regulations – Championship & Event Procedures

3.1 Entries

- 3.1.1 Competitors are responsible for sending in correct and complete entries with the correct entry fee prior to the closing date for entries of each event.

Incorrect or incomplete entries (including Entrants, Driver or Co-driver to be nominated) may be held in abeyance until they are complete and correct and the date of receipt for acceptance of entry purposes shall be the date on which the Secretary of the Meeting receives the missing or corrected information or fee.

- 3.1.3 Any withdrawal of Entry or changes to Driver, Co-driver and vehicle made after the acceptance of an entry must be notified to the Secretary of the Meeting in writing. If Driver/Co-driver vehicle changes are made after publication of Entry Lists the competitor concerned must apply for approval of acceptance by the Clerk of the Coarse BEFORE signing on.

3.2 Briefings

- 3.2.1 Organisers should notify Competitors of the times and locations for all briefings in a Competitor Bulletin/Final Instructions. Competitors MUST attend all briefings.

3.3 Event Length.

- 3.3.1 The stage and road mileage for each event shall be as published in the event Supplementary regulations.

- 3.3.2 If the event, for whatever reason does not run at least 75% of its competitive mileage, then championship points will still be awarded at half their normal value.

3.4 Regulations for Event Organisers

3.4.1 The Championship title MUST be entered in FULL on event regulations, final instructions, results and any other bulletins as the "2008 Ward Construction, AEMC Stage Rally Championship"

3.4.2 Each member club of the Association shall be entitled to nominate any National 'B' status stage rally promoted by themselves or in conjunction with another club(s) for championship status. The championship co-ordinator may accept nominated events provided the criteria specified in these regulations are adhered to and MSA approval is given should an originally nominated event fail to fulfil a date.

3.4.3 Clubs seeking event nomination shall complete an Event Application Form and forward it to the Championship co-ordinator. No event shall be accepted until this has been undertaken.

3.4.4 Final acceptance of a date in the Association Championship calendar is conditional upon the following:

The Club has paid its subscription to the Association of Eastern Motor Clubs for 2008 and the event is nominated by the AEMC Stage rally co-ordinator following discussions with the organisers.

The event is not listed to run on the same day/night/weekend as another Championship qualifying round. Should a clash of event dates occur then the Championship co-ordinator will refer to previous years in order to ascertain historical usage of that date.

That the event has not been refused Championship status due to non-compliance with AEMC Championship Regulations in the previous year(s).

Regulations must be adhered to at all times. Failure to do so may render the event liable to immediate deletion from the Championship.

The event is a qualifying round of the Championship.

That the AEMC Championship contenders and/or member clubs and/or their members are invited to the event.

The event must comply with all aspects with the Observer system where applicable.

The event is held on the notified day or night.

The Stage Rally Co-ordinator has been advised when a MSA permit has been issued.

3.4.5 To have a new event recognised for Championship status a member club must have organised events of similar category and type and/or have had the event observed by competitors and/or other personnel appointed by the Association in the Championship calendar.

3.4.6 It is a condition of acceptance that should an event is cancelled for whatever reason, the Stage Rally Co-ordinator should be notified in writing by either fax or email.

4.5 Event Organisers Responsibilities

4.5.1 It is a requirement that AEMC member clubs requesting Championship status be required to & adhere to the following;

Send to the Championship co-ordinator;

A) Three sets of Supplementary Regulation upon publication.

B) A set of final instruction and entry list AT LEAST 48 hours prior to the event.

C) Two (2) sets of results including a FULLY UPDATED ENTRY LIST within 7 days of the event.

(Note: All entry lists must include the first name of EACH competitor, club, car, capacity, class & championship eligibility where ever possible)

D) Send a set of Supplementary Regulations to EACH Championship registered contender.

The championship co-ordinator will supply address details upon request.

4.5.2 If an event runs additional classes for specific marques etc (GroupN, Super 1600 etc.) or runs with a class structure differing from 5.2, they must additionally send details of the following; Engine configuration, i.e. number of valves/ camshafts, whether forced induction and whether 2WD or 4WD.

4.5.3 Should any event fail to comply with MSA Regulations or AEMC Championship Regulations, then the Association reserves the right to delete the event from the championship.

5 Technical Regulations

5.1 All competing vehicles in any championship round must comply with Section C(b) and Section H Technical Regulations for Special Stage Rallies of the 2008 MSA Yearbook.

5.2 The Championship class structure will be;

Class A – Up to 1400cc.

Class B – From 1401cc up to and including 1600cc.

Class C – From 1601cc up to and including 2000cc.

Class D – 2 wheel drive cars over 2000cc.

Class E – All 4 wheel drive cars.

All forced induction vehicles are subject to an additional capacity ratio of 1:1.7

5.3 Forward facing lights must have the glass protected (Sealed surface venues only)

5.4 Catch tanks must comply with Section G 116.



Specialists in.....

FORD

SUBARU

WRC

PORSCHE

MITSUBISHI

F2

S1600

If you would like to know more, please contact Mark Wood

Mobile 07961 561605

e-mail mark.wood@m-techd.com

www.m-techd.com

Rally Car Hire • Preparation • On-event Service

ROAD • RACE • RALLY